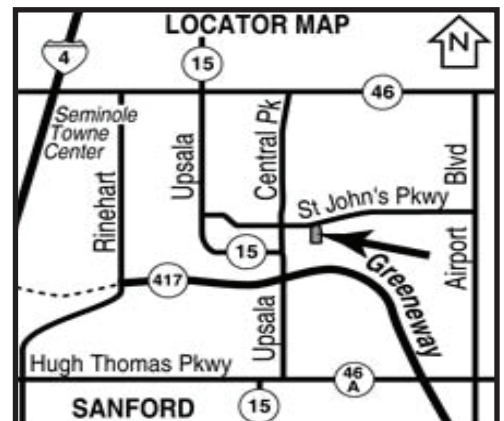


# FOR LEASE

Office/Warehouse - Sanford Central Park  
3959 St Johns Parkway

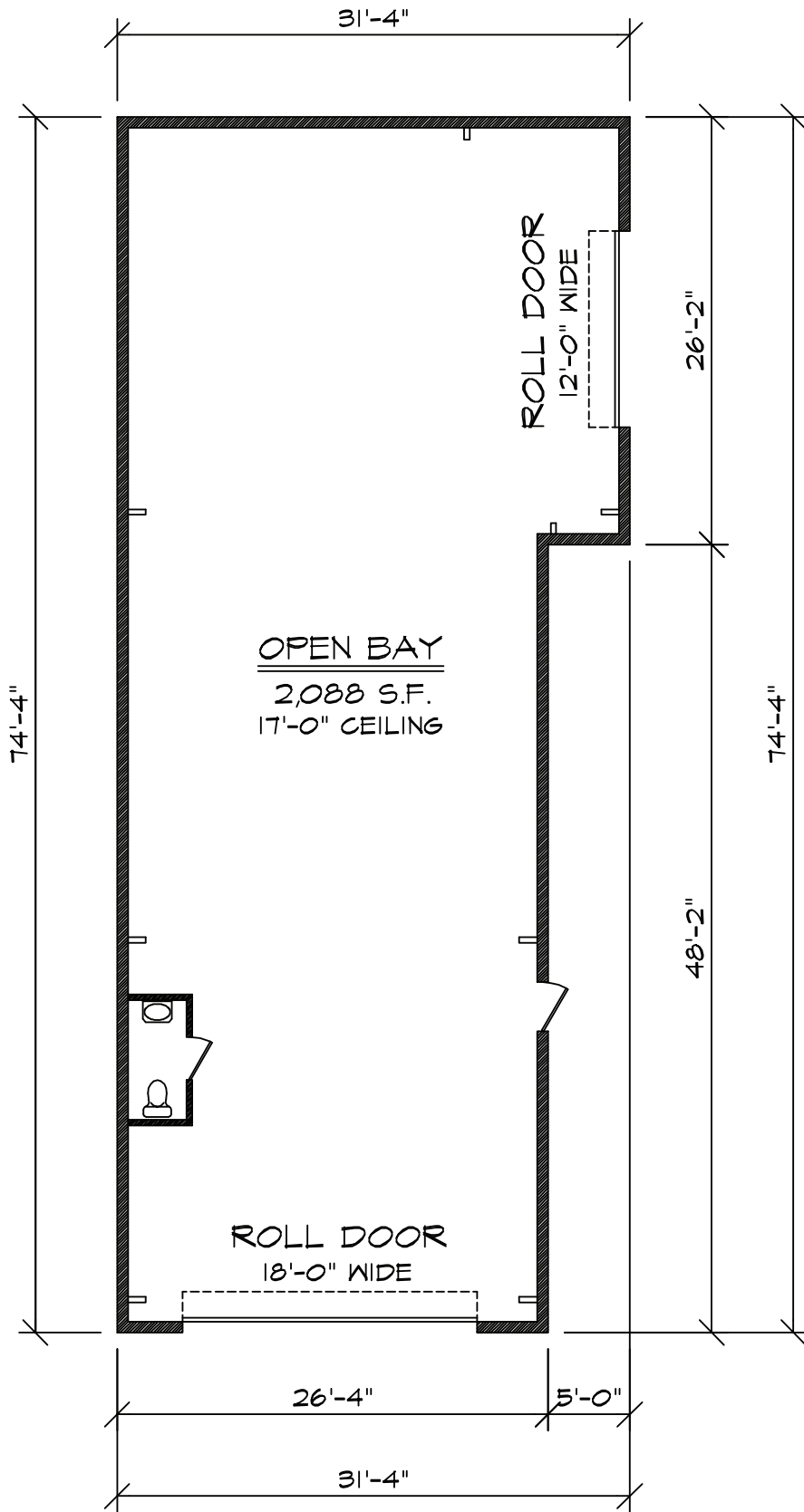


- 2,088sf 100% WAREHOUSE. AVAILABLE IMMEDIATELY
- 2 grade level roll up doors (12'x14') and (14'x18') w/interior restroom
- Common loading dock on-site
- Landlord pays CAM; Cat 5 wiring; 3-phase power and security system
- Front and side entry locations w/ exhaust fan & newly-painted floors/walls
- Short term lease available
- **EASY ACCESSIBILITY WITH FRONT AND SIDE GRADE LEVEL ACCESS**



**Penney Lawrence (407) 353-7019**  
**info@DaveBrewerProperties.com**  
**www.SeeOurNewOffice.com**





3959 ST. JOHNS PKWY.  
 SANFORD, FLORIDA 32771

